

ThirdiMANAGEMENT

Placing community input into the heart of decision-making.

INSIGHT INTO [IMPACT.COM.AU](https://www.insightintoimpact.com.au)



*Submitted to The Fig Tree Children
on the 28th August 2020*

Outcomes Based Measurement Score

Using the 3i Management Model©, we assessed the relationships that occur between the challenges that are addressed by *The Fig Tree Children* and the impact that occurs through their services. We assessed the outcomes based on the participants' perception of the impacts being positive or negative. When assessed against the UN SDG Targets, we determined a score that represents how the beneficiaries perceive The Fig Tree Children's core services as having a positive outcome.



4 QUALITY EDUCATION



100% POSITIVE OUTCOME

TARGET 4.1

By 2030, ensure that all girls and boys complete free, equitable and quality primary and secondary education leading to relevant and Goal-4 effective learning outcomes.

4 QUALITY EDUCATION



67% POSITIVE OUTCOME

TARGET 4.6

By 2030, ensure that all girls and boys complete free, equitable and quality primary and secondary education leading to relevant and Goal-4 effective learning outcomes.

2 ZERO HUNGER



79% POSITIVE OUTCOME

TARGET 2.1

By 2030, end hunger and ensure access by all people, in particular the poor and people in vulnerable situations, including infants, to safe, nutritious and sufficient food all year round.

Participants

26 participants provided rich, robust text that invoked emotion and detailed their gratitude for *The Fig Tree Children's* services by stating what was being done well and what aspects could be improved. The text was then thematically coded to comprehensively depict their perspectives throughout this report and onto the *The Fig Tree Children* organisation.



71%
POSITIVE
REPORTING

88%
POSITIVE
REPORTING

69%
POSITIVE
REPORTING



PARTICIPANT GROUPS

14 Children (Aged 4-11)

5 Adolescent Youths (Aged 12 - 14)

7 Teen/ Early Adults (Aged 15-19)

Barriers to Education



ACQUIRING SCHOOL SUPPLIES



INABILITY TO WALK TO SCHOOL



GOING TO SCHOOL WITHOUT LUNCH



ADEQUATE ACCOMMODATION



ACCESS TO AND MONEY FOR MEDICATION



ADDITIONAL FAMILY MEMBERS STRUGGLING OR REQUIRING ASSISTANCE



INABILITY TO PAY SCHOOL FEES



LACK OF COMFORTABLE SLEEPING QUARTERS



NO INCOME/ MONEY FOR LIVING, LET ALONE PAY FOR EXTRAS



OVERCOMING HUNGER & RECEIVING SUSTENANCE



NO MEDICAL FACILITY IN PROXIMITY



NOT ABLE TO AFFORD CLOTHING



NEED FOR CLEANING SUPPLIES



NEED MONEY FOR RENT



NEED SCHOOL BAG AND NEW SHOES

INSIGHT INTO IMPACT.COM.AU
The vast number of challenges the beneficiaries experience in their daily lives, which impact their ability to go to school and their overall livelihood.

ThirdMANAGEMENT

Understanding Our Process: A Case Study Example related to Negative Impact



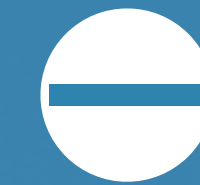
ISSUE OR CHALLENGE

31% of Participants reported they faced challenges due to not having enough spending cash/ The Fig Tree Children providing an insufficient allowance.



RESPONSE FROM ORGANISATION

Acknowledging the beneficiaries require cash reserves, 8 Participants detailed how The Fig Tree Children have attempted to address this challenges by providing school supplies (50%) and respond with an allowance provision (38%).



SUBSEQUENT IMPACT

Although those responses were received and prevailed with a positive impact, 3 of the beneficiaries stated this cash requirement has negatively impacted to the degree that they were unable to complete their homework. Through the data, we are able to determine that the reason for the negative impact was not related to The Fig Tree Children's response, but rather other challenges occurring in the lives of the beneficiaries.



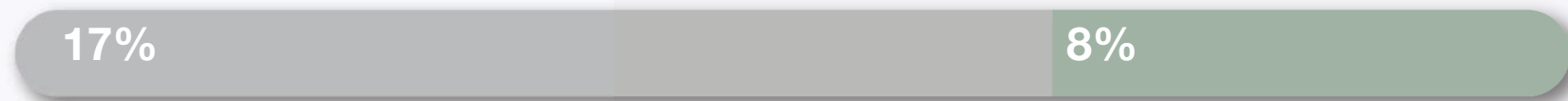
Medication Stipend



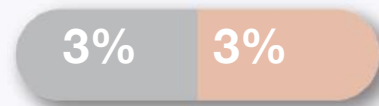
Lack of Basic Needs



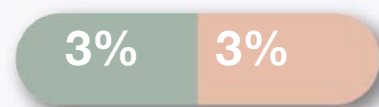
Insufficient Allowance



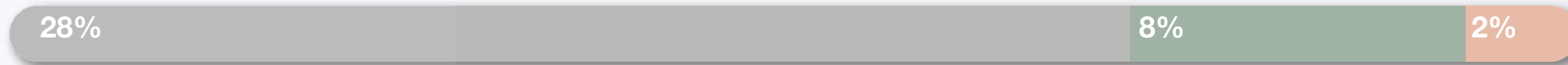
Hunger



General Hardship



Financial Challenges (School Fees)



Accommodation



INSIGHT INTO IMPACT.COM.AU

Third i MANAGEMENT

Categorising Challenges

77%

OF CHALLENGES ADDRESSED BY THE FIG TREE CHILDREN RESULTED IN A POSITIVE IMPACT

Understanding how the beneficiaries perceive the issues and challenges in their lives is very important towards understanding what responses are required to ensure positive impacts and subsequently beneficial outcomes. Among the 42 uniquely identified ‘Challenges,’ 14 thematic categories were derived. Here, the 7 most significant are displayed. Unsurprisingly, Financial Challenges around School Fees emerged as the dominant challenge (14), from which all participants stated The Fig Tree Children’s ability to provide them with an ongoing education was a positive outcome. Hence, it can be derived that 54% of the Participants interpret The Fig Tree Children’s services as being rooted in education; whereas, the remaining Participants view other services or the additional benefits of going to school as holding greater value in their life.

The Fig Tree Children's Services

CARERS OF CHILDREN (AGED 4-11)

ADOLESCENT YOUTH (AGED 12 – 14)

TEEN/ EARLY ADULTS (AGED 15 -19)

Provision of School Supplies



Provision of Food



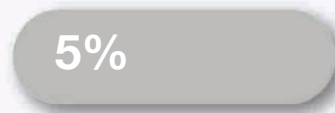
Provision of an Allowance



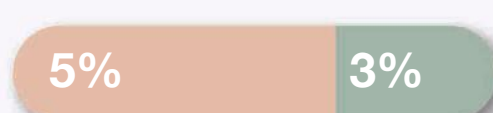
Payment of School Fees



Assisted with Healthcare



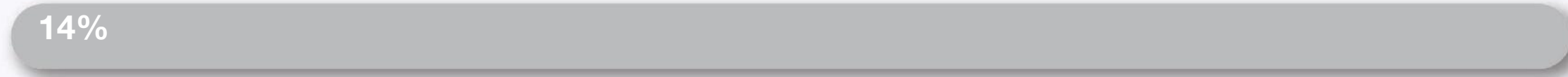
(Inadequate) Internet Infrastructure Response



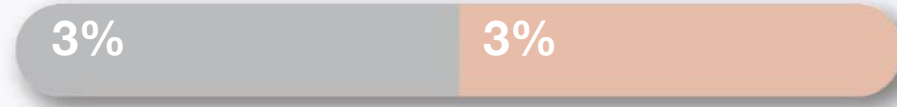
The Fig Tree Children's Services address how they, as an organisation, provide for/ have responded to the issues/ challenges being experienced by their beneficiaries.

In total there were 12 thematic categories derived by the Participants' responses; however, only the most significant are displayed according to the reporting cohort. When categorising the thematic categories, we separated Positive from Negative contextual sequences according to how the participants reported the impact and/ or any ongoing challenges. Where challenges were ongoing or not addressed, this impacted the Outcome-Based Measurement Score.

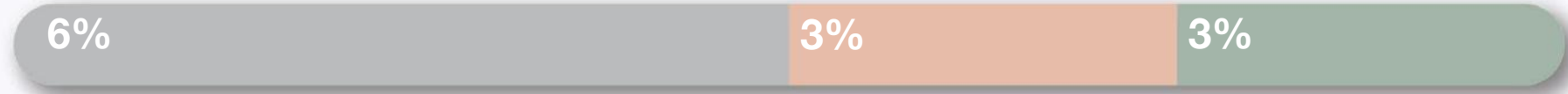
Stability



Reduced Capacity to do Homework



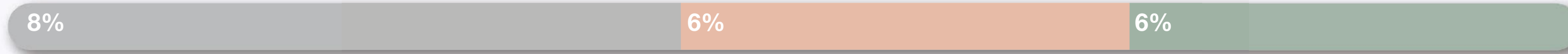
Mental Well-being (Happiness)



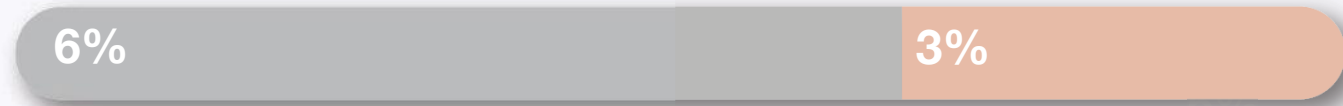
Insufficient Amount of School Provisions



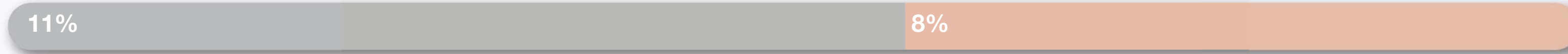
Increased Opportunities



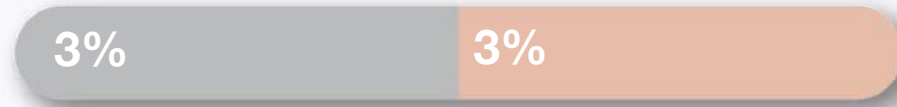
Increased Nourishment



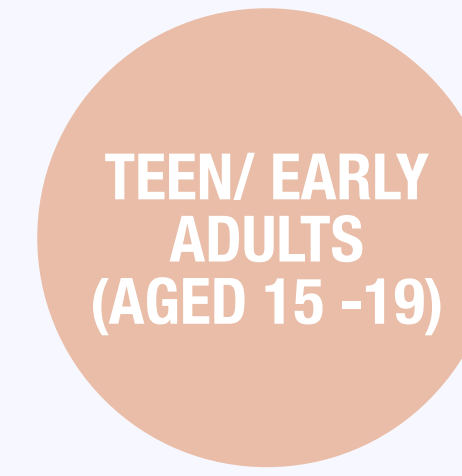
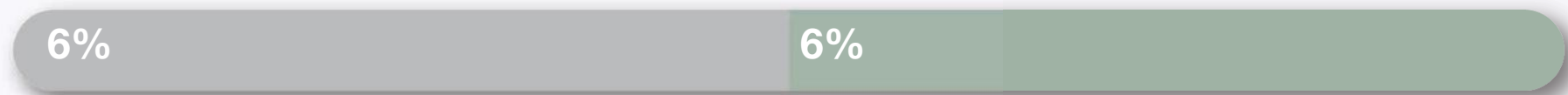
Increased Literacy



Increased Goodwill (Support Others)



Increased Confidence



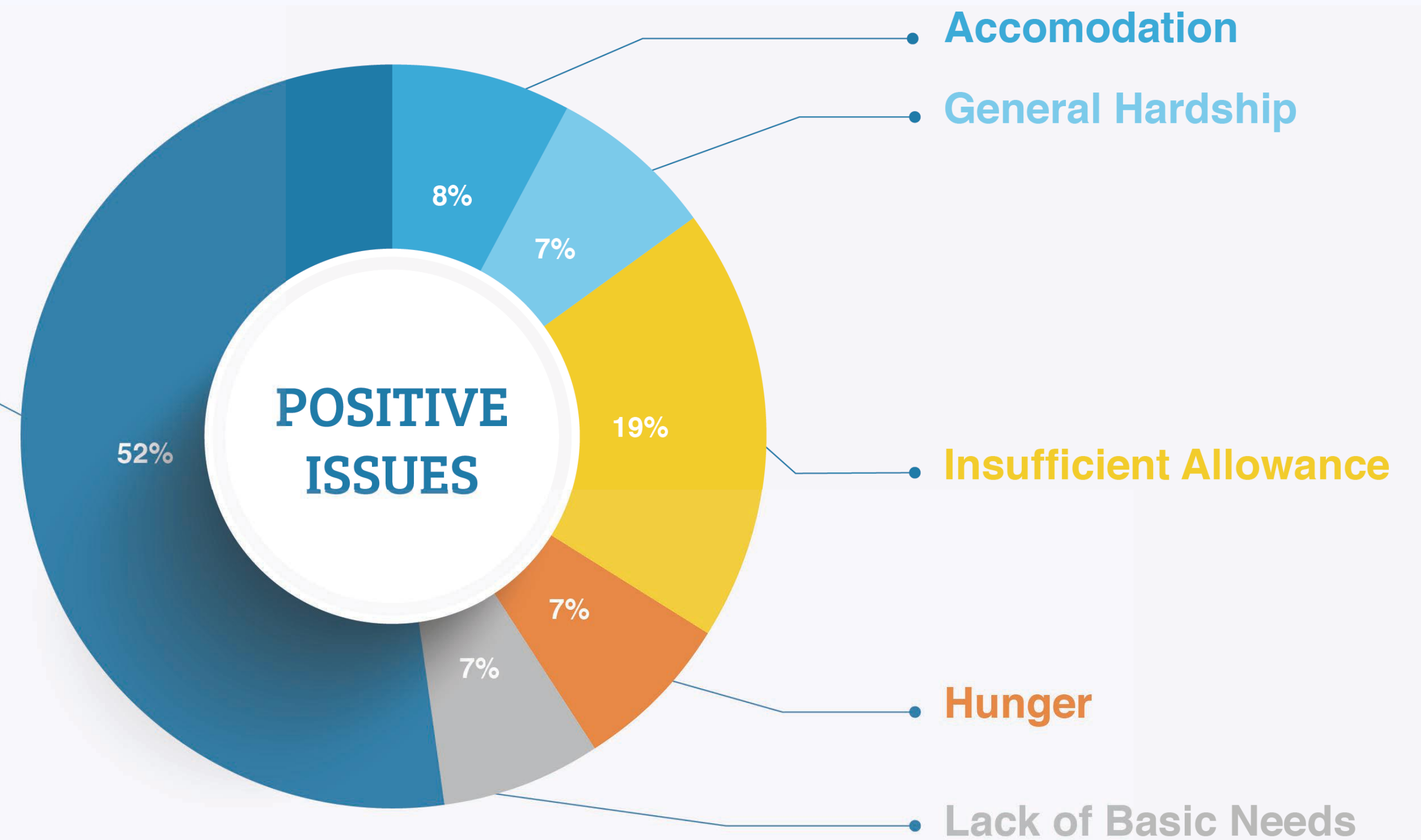
Resulting Impacts

From the 12 thematic categories derived from the Participants, the 9 most significant are presented according to reporting cohort. Important to appreciate is that these categories depict how the participants interpret the impacts from The Fig Tree Children’s responses to beneficiaries’ challenges.

Greatest Positive Impact

The graphic shows all Issues experienced by the beneficiaries that The Fig Tree Children were able to manage to a positive Impact. Financial Challenges (School Fees) accounts for over half of the reported/ perceived positive context, which is to be expected given the precedent set to put these children through school. However, nearly half have reported a range of other issues that depict their situation/ the benefit of being a beneficiary of The Fig Tree Children's services.

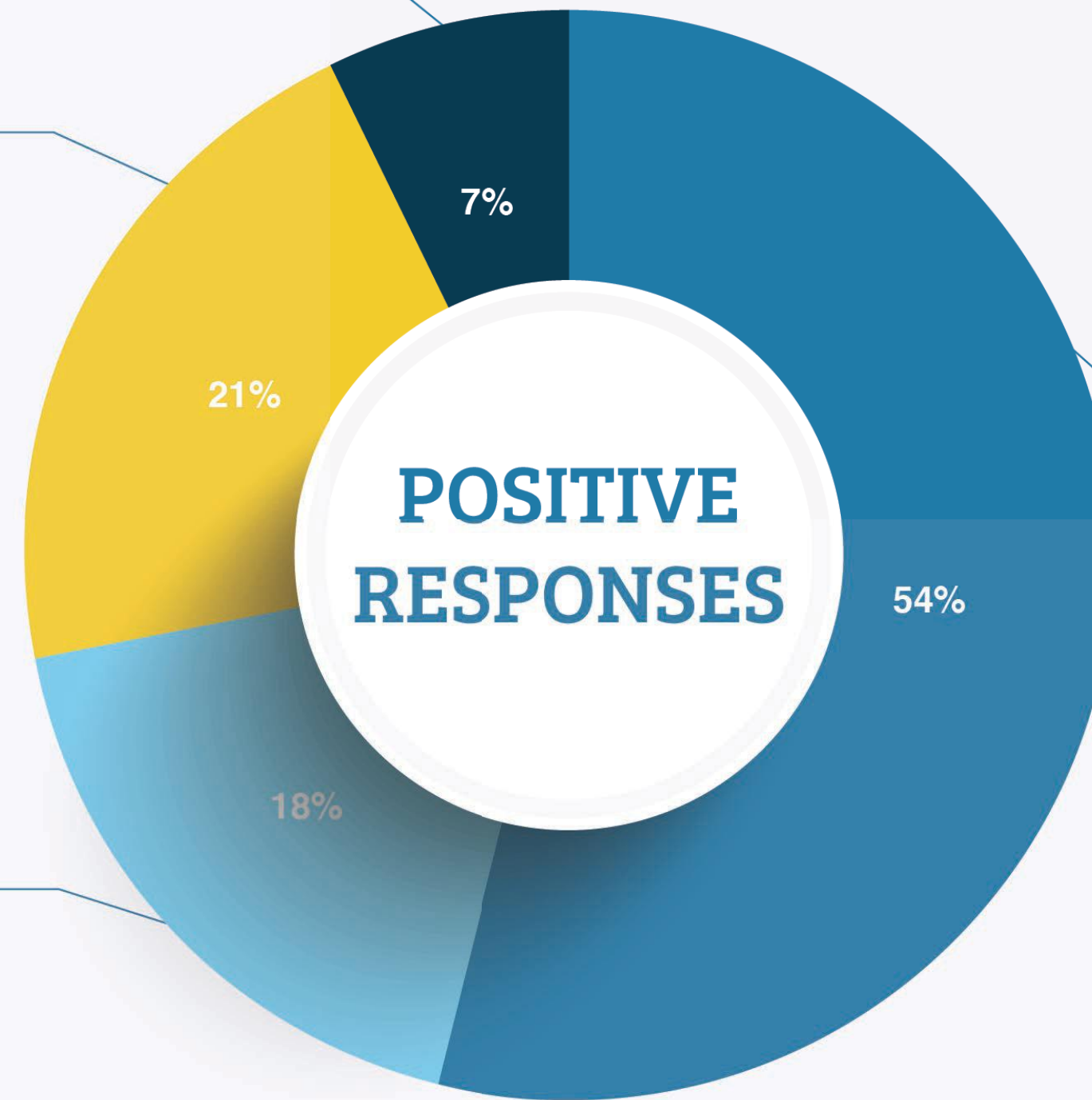
**Financial Challenges
(School Fees)**



Needed Attention towards Healthcare

Provision of School Supplies

Provision of Food

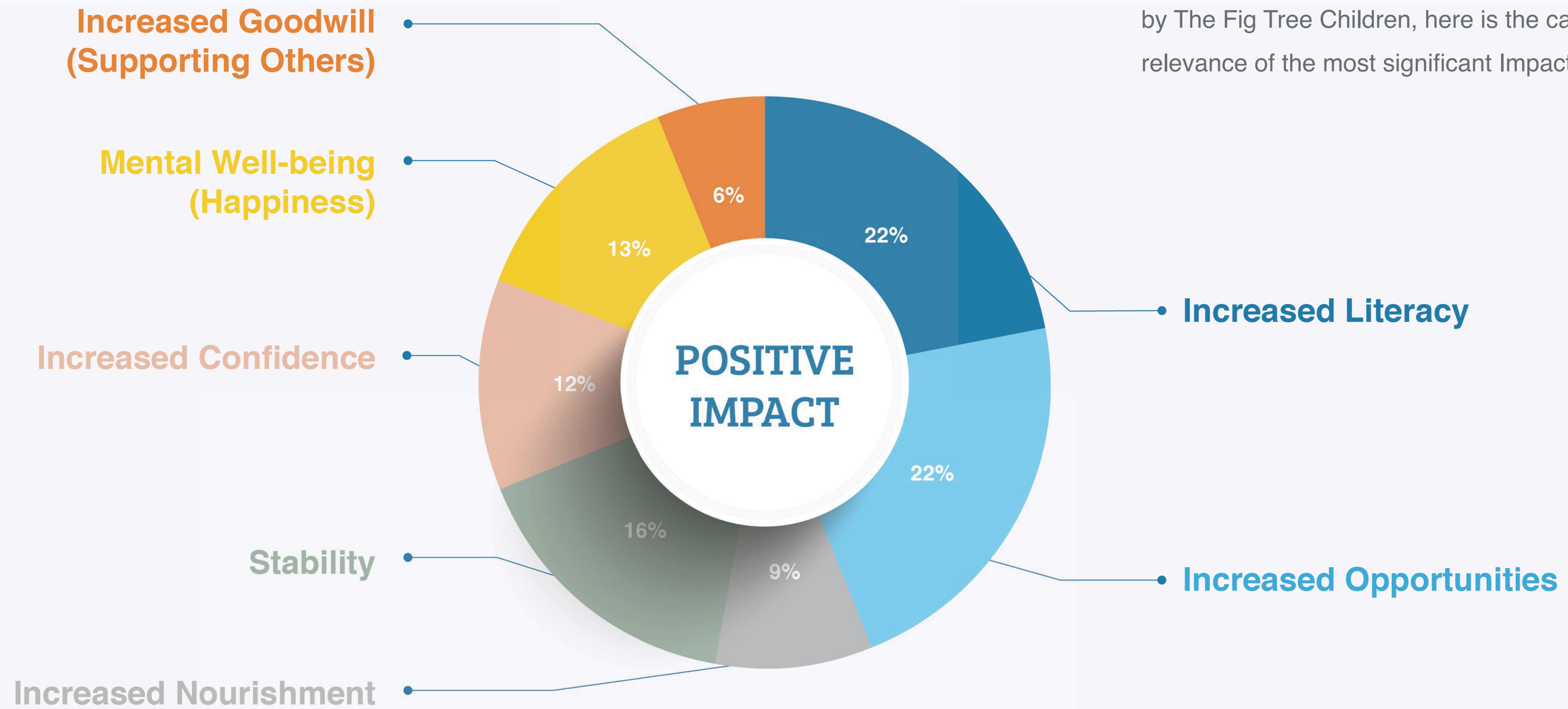


ACHIEVING POSITIVE IMPACT

The following Services (Responses) incorporated by The Fig Tree Children resulted in the greatest percentage of Positive Impact, which were linked several identified UN SDG Targets.

- Payment of School Fees

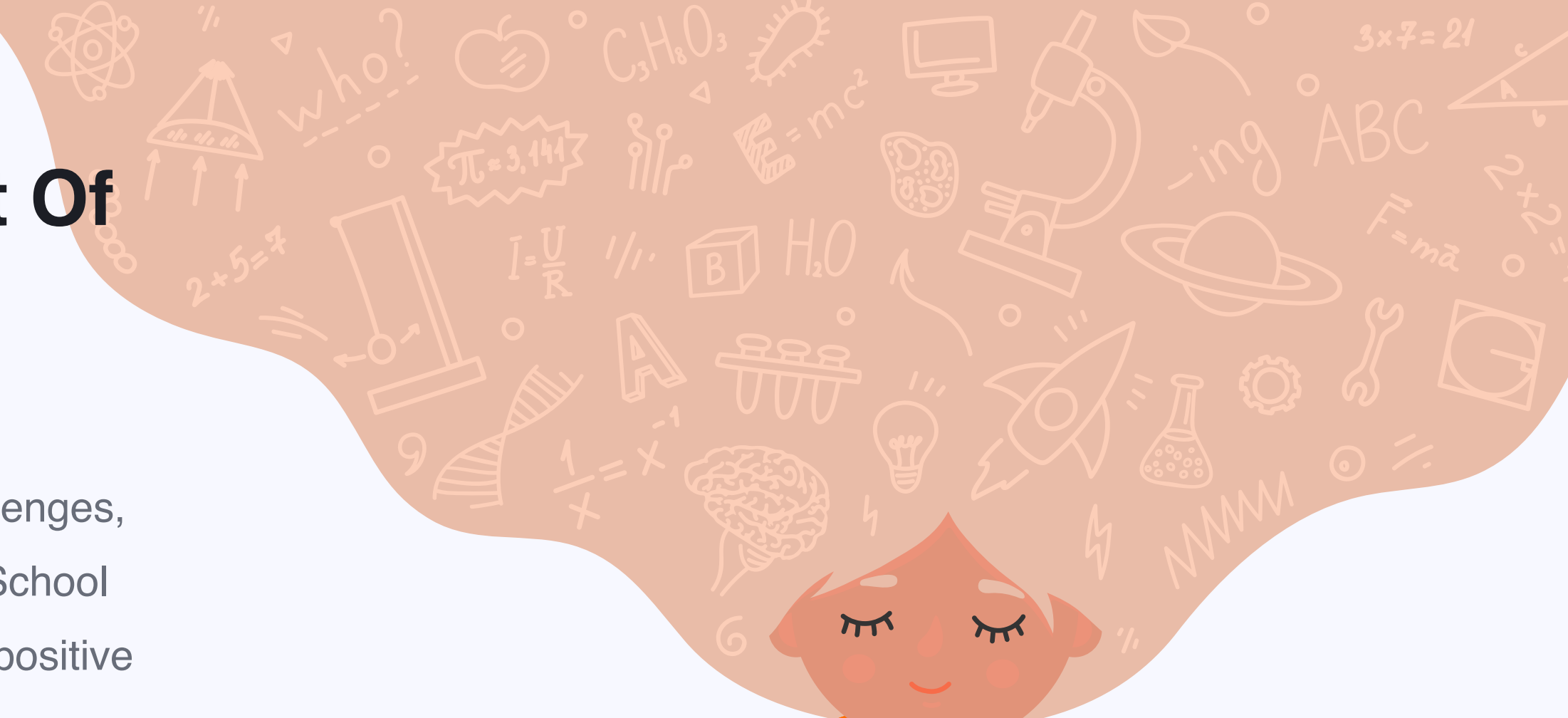
As a result of the Services (Responses) provided by The Fig Tree Children, here is the categorical relevance of the most significant Impacts.





Response: Payment Of School Fees

In Response to the Financial Challenges, The Fig Tree Children paid their School Fees, which resulted in 8 different positive Impacts.



27% INCREASED LITERACY

27% INCREASED OPPORTUNITY

Impact: Increased Literacy And Opportunity

Were the two most frequently reported impacts stemming from The Fig Tree Children's Payment of School Fees. This clearly depicts relevance to SDG Target 4.1 and the relationship students place on an education.



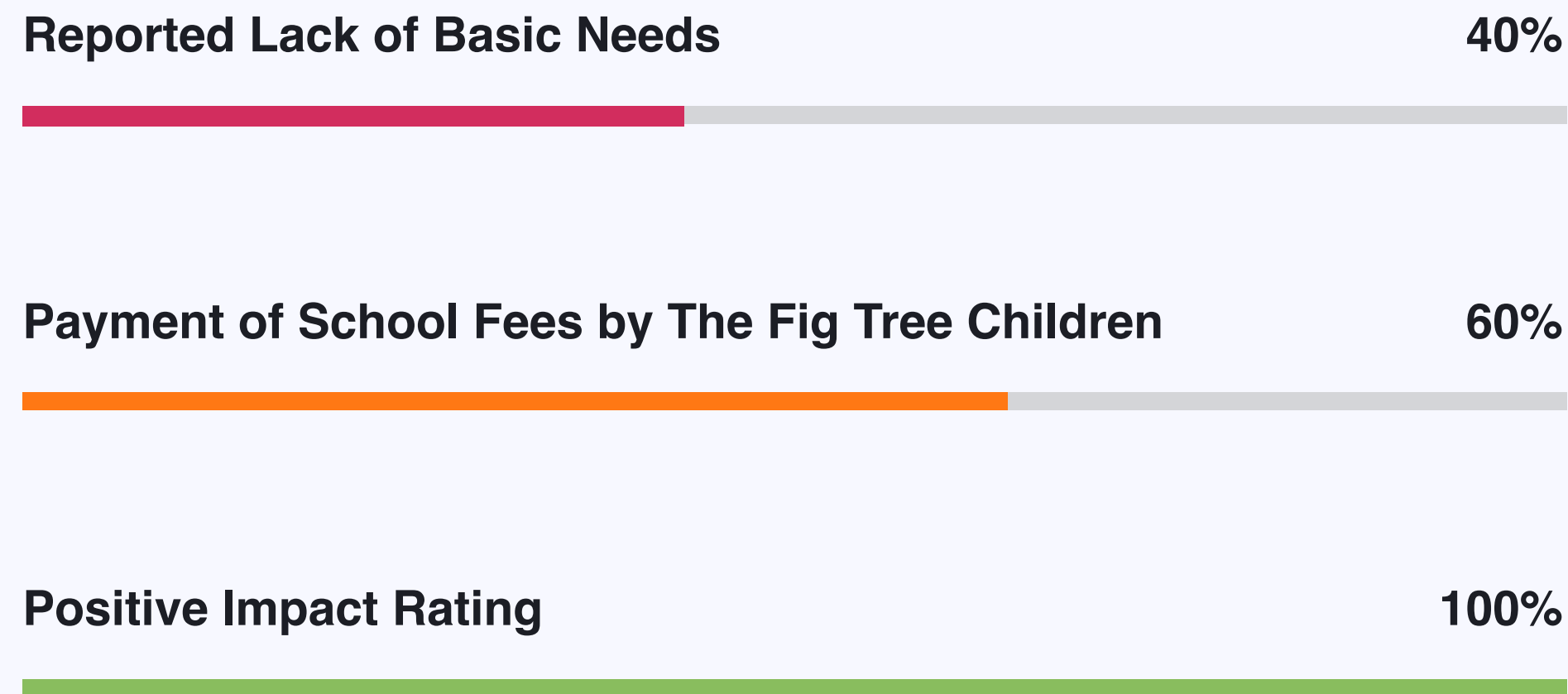
20/11/2007	KUSOMIA NA KUNYIKA				
1	2	3	4	one	1
one	Two	Three	Four	Two	2
3				Three	3
5	6	7	8	Four	4
Five	Six	Seven	Eight	Five	5
9	10			Six	6
Nine				Seven	7
				Eight	8
				Nine	9
				Ten	10

Issue: Financial Challenges

54% of the beneficiaries reported challenges paying their school fees

The Impact of Increased Literacy

As the most frequently reported Impact (tied), it is important to understand the contextual relevance for what these beneficiaries must overcome and what is required from The Fig Tree Children to ensure a positive outcome. This slide summarizes the relationships between the data points/ the contextual sequence that must be overcome to achieve Literacy.



27%

INCREASED LITERACY

Over one-quarter of beneficiaries understand that without The Fig Tree Children’s involvement they may not have ever learned to read. What is also revealing is that ‘literacy’ is what they state as the most rewarding benefit.

4 QUALITY EDUCATION



INDICATOR 4.1.1

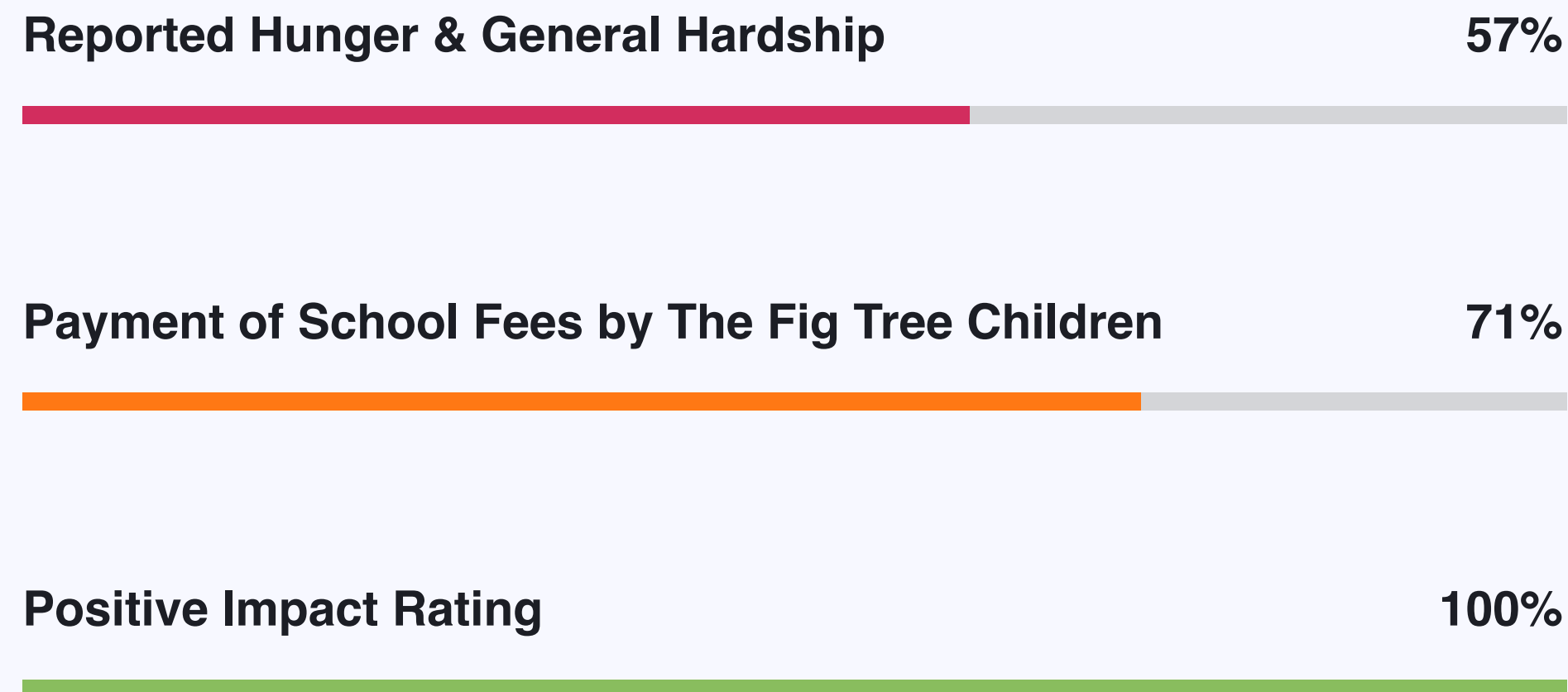
Proportion of children and young people at the end of lower secondary achieving at least a minimum proficiency level in reading.



“Before this time I was not able to read and write as I am doing now.” - *Late Teen (16 years)*

The Impact of Increased Opportunity

Compared to 'Increased Literacy', the beneficiaries who reported this Impact generally stated more severe Issues/ Challenges that The Fig Tree Children's services addressed so they could go to school.



27%

INCREASED OPPORTUNITY

These students perceive the impact to be on a broader sense, which indicates they perceive the services as a means to an improved lifestyle.

4 QUALITY EDUCATION



TARGET 4.1

By 2030, ensure that all girls and boys complete free, equitable and quality primary and secondary education leading to relevant and effective learning outcomes.



“The issue of not going to school, and going to school without lunch but since Fig Tree started supporting me, everything has changed which I am very happy about” - *Child*

“I now have the opportunity to be among my peers talking about school and talk about what we aimed to be in future.” - *Adolescent Youth*

Issue to Impact: Learning to overcome

MOST REPORTED ISSUE

8 Participants reported **Insufficient Allowance** as their primary Issue, with the The Fig Tree Children managing this issue to a positive impact 63% of the time. This examples demonstrates the variety of Responses that worked/ did not and the even greater variety of Impacts that ensued.

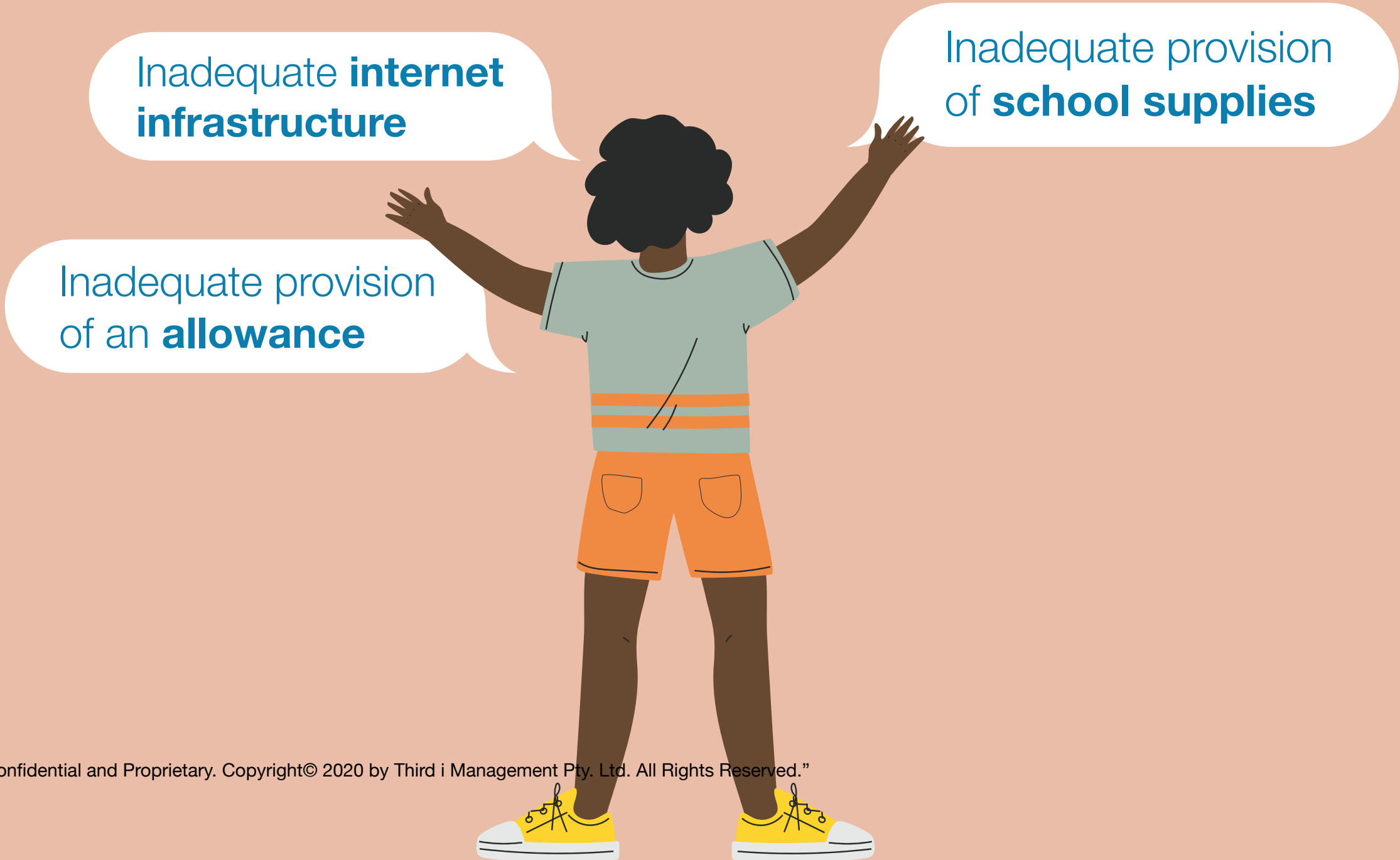


Most Prolific Negative Impact

The most frequently reported (negative) categories are presented to identify areas for future concentration of services. The categories presented are based on sheer percentages, not as a result of them having contextual relevance.



An **insufficient medication stipend** was reported as an issue by 19% of the respondents as leading to the most significant negative impacts



INSUFFICIENT AMOUNT OF SCHOOL SUPPLIES

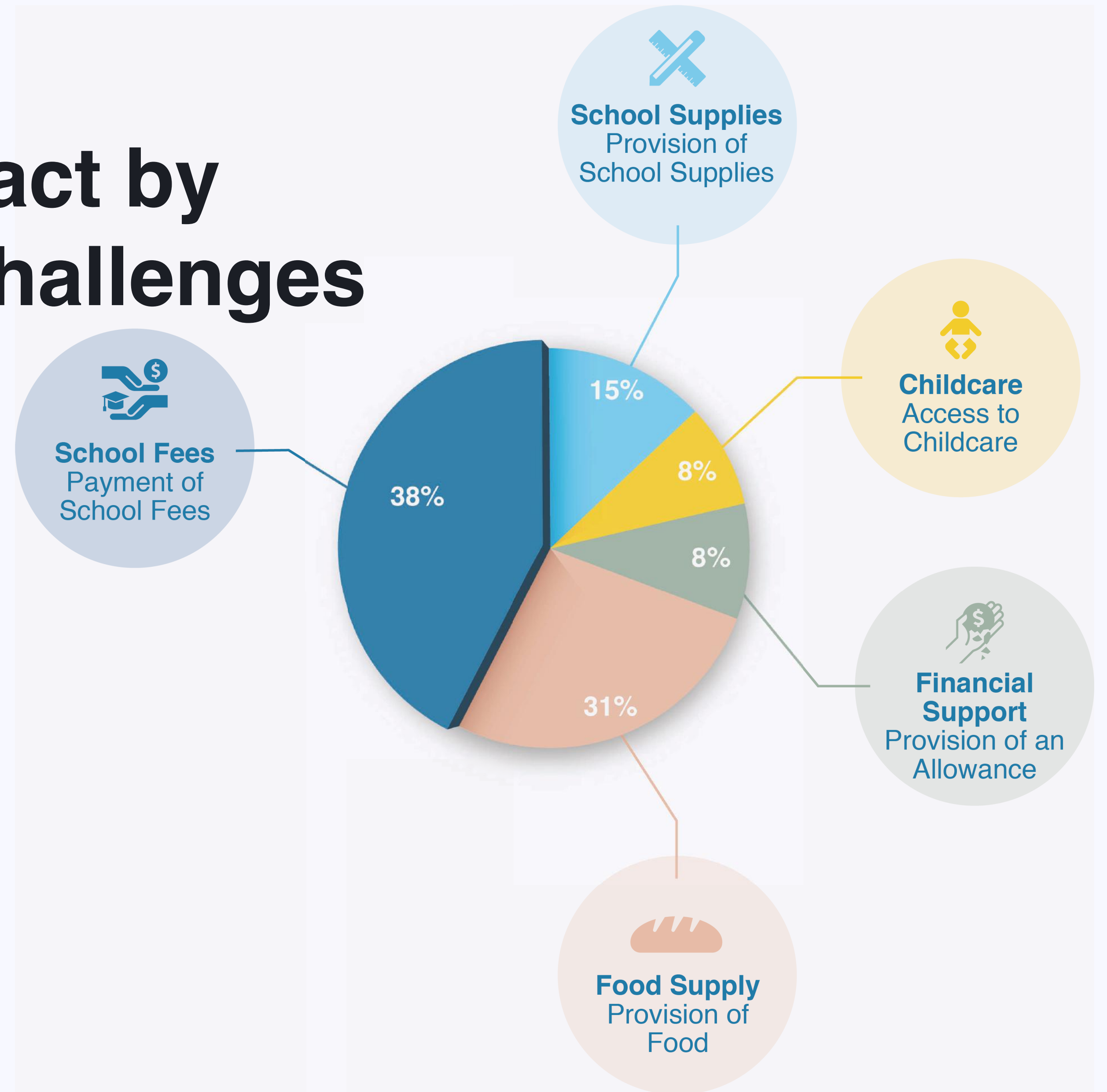


REDUCED CAPACITY TO DO HOMEWORK

These two thematic categories emerged as the two areas that could be easily swayed into the positive through minimal effort spent on the identified (negative) Responses.

Achieving positive Impact by addressing Financial Challenges

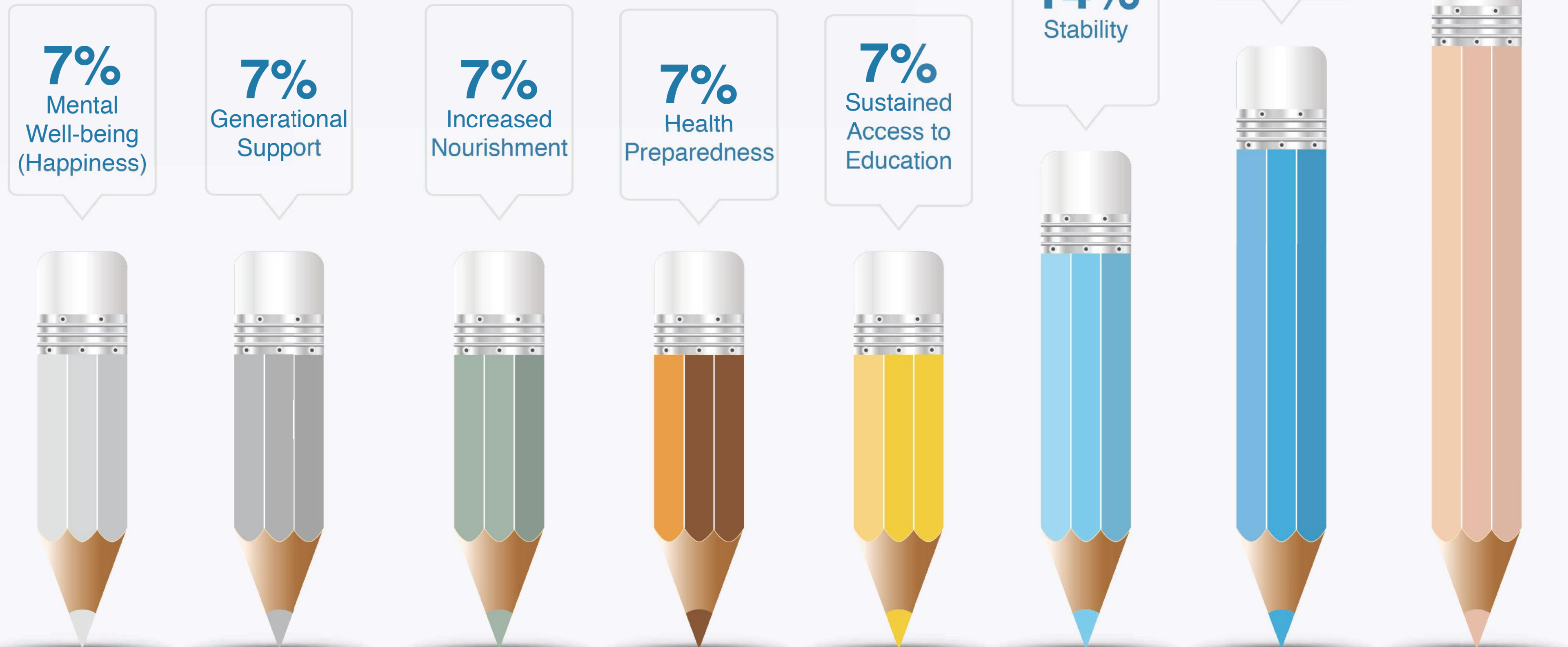
Beneficiaries faced financial challenges, leaving them unable to pay school fees. The Fig Tree Children responded to this issue. Their responses were evaluated by the beneficiaries. Shown are the positive impact ratings. Increasing food supply and obtaining further funding for school fees will result in the greatest impact.



Insight into Positive Impact

A POSITIVE RESPONSE

The Fig Tree Children paid the school fees for every student in their program. The Participants reported a multitude of positive impacts that stemmed from this.

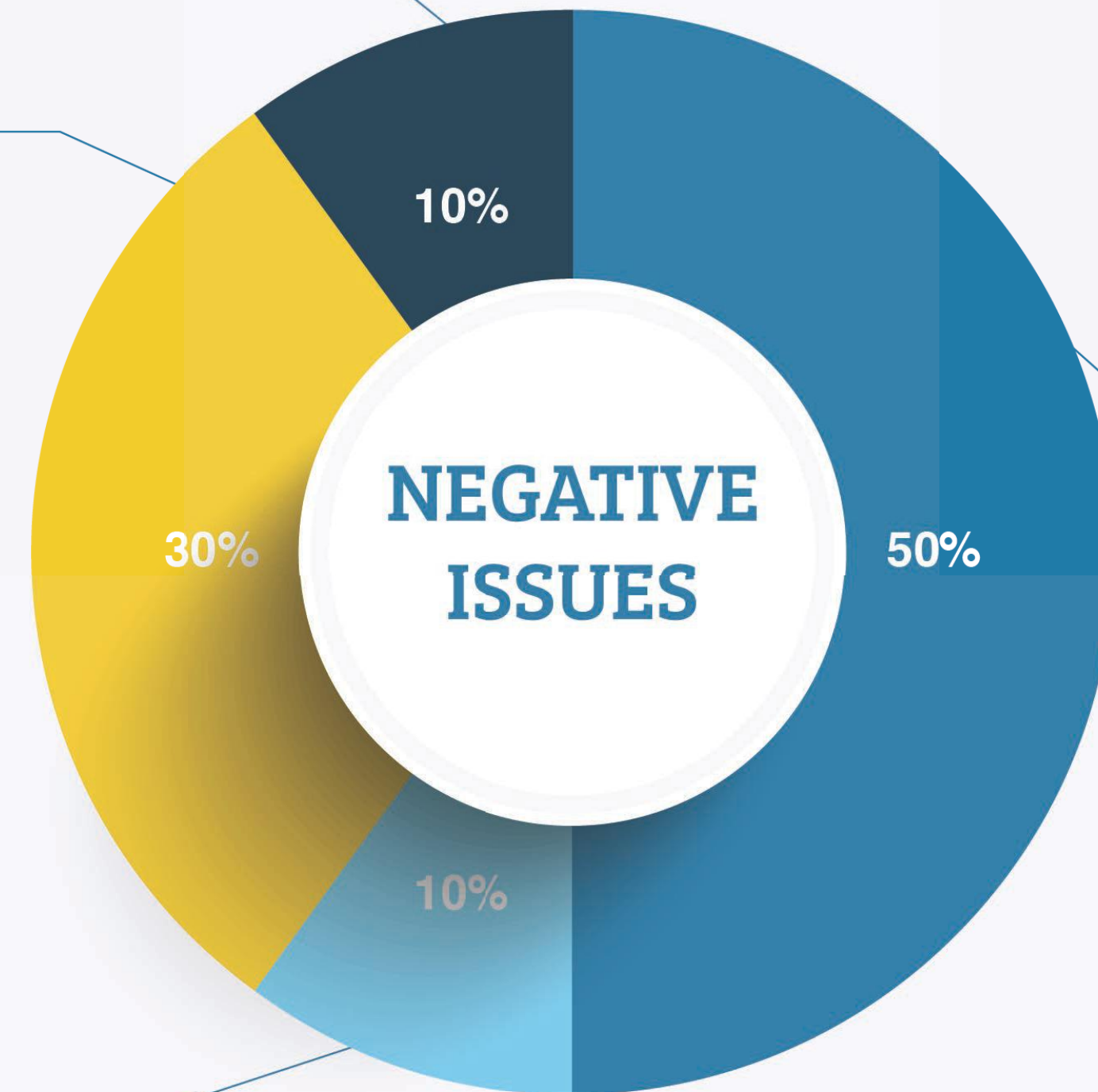


Understanding Negative Impact

Concerns about other Family members

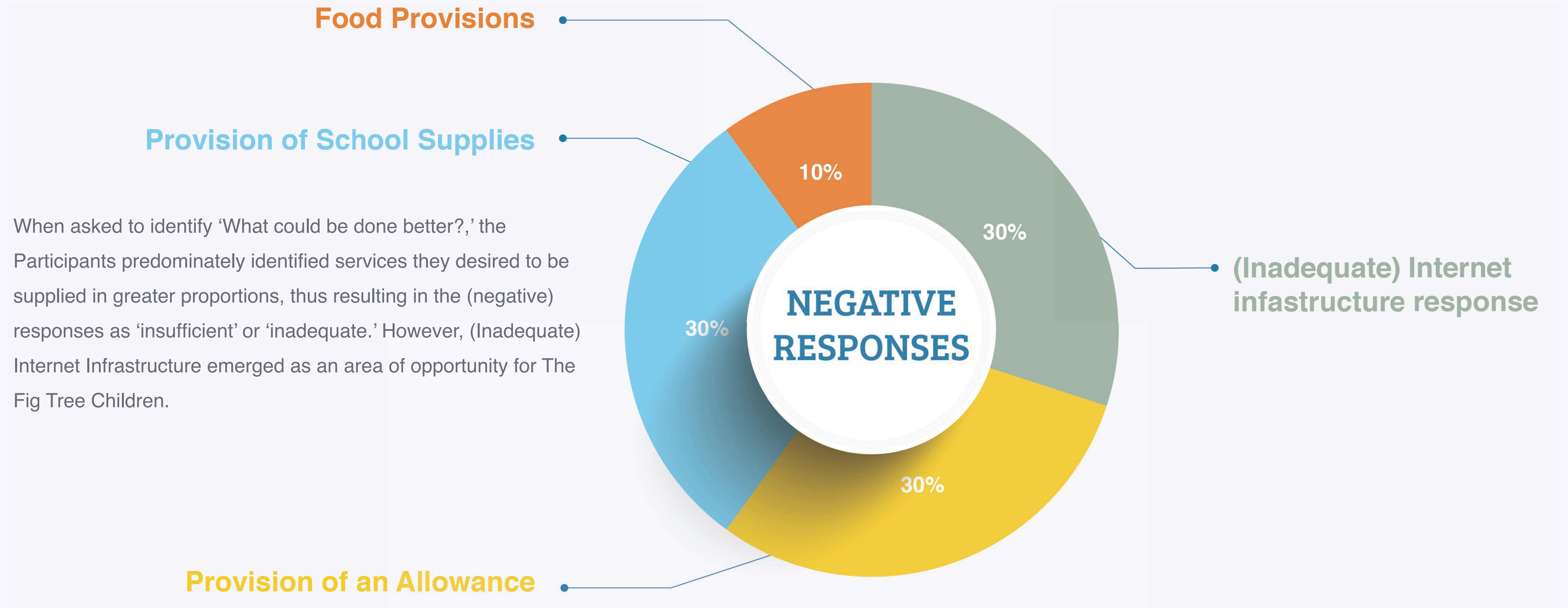
Insufficient Allowance

Displayed are issues & challenges that the beneficiaries have identified as being able to be improved. Given the overwhelming positive reporting presented with the Positive Issues, what is most important is that The Fig Tree Children take these concerns on board for future work/ areas they can continue to expand into as their capacity as an organisation grows.



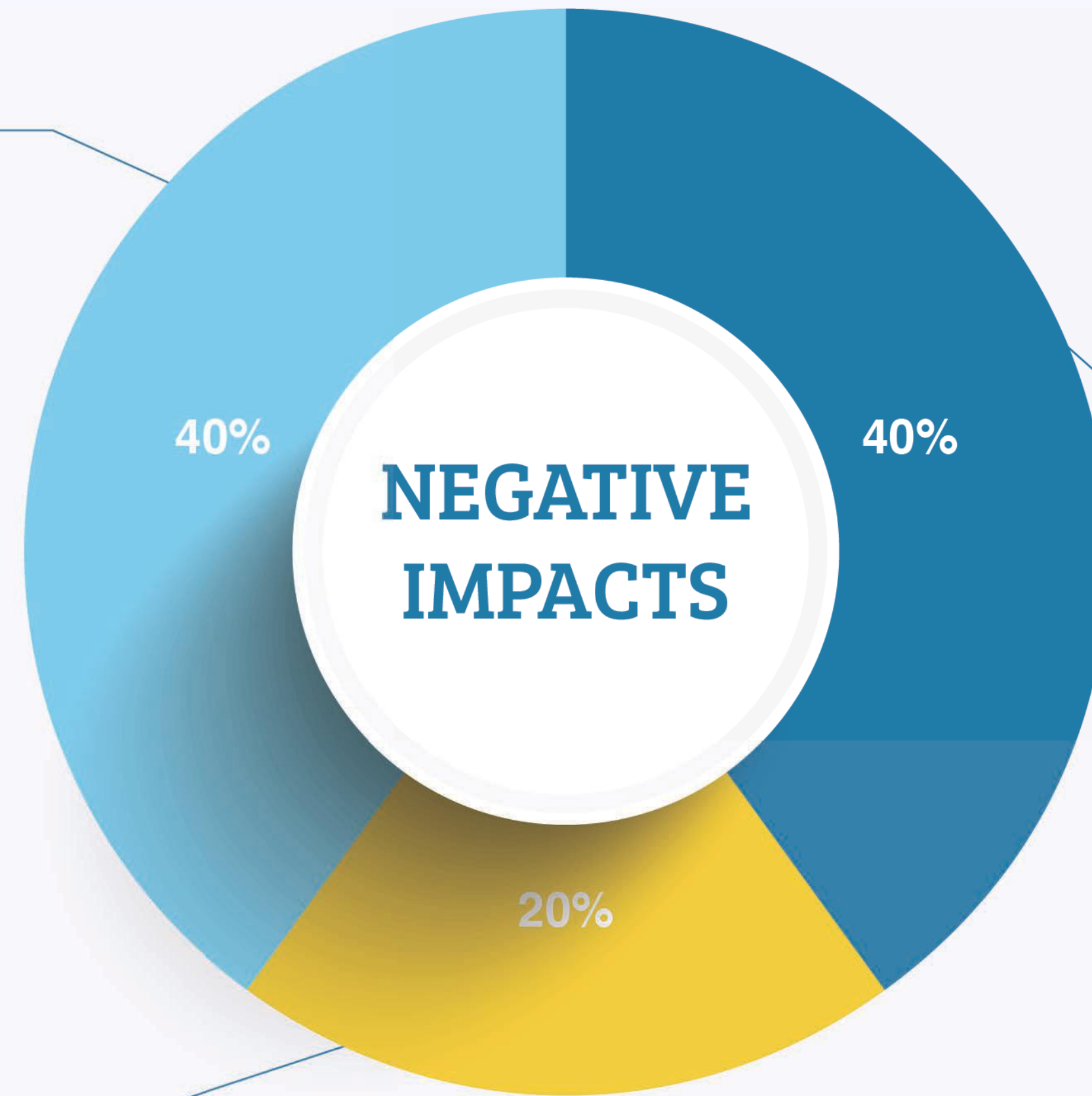
Medication Stipend

Lack of School Supplies



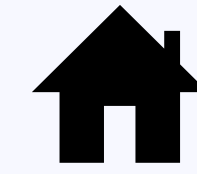
Insufficient Amount of School Provisions

Only 13% of the reported Impacts were identified as Negative.



• Reduced capacity to do homework

Insufficient Allowance



THE IMPACT OF ADEQUATE ACCOMODATION

8% of Participants identified Positive Impacts through Accommodation. Due to another 8% stating they still need improved accomodation, these Impacts are reviewed to support accomodation as a continued focal point.

“Create a chance for better self-expression and better communication.”
- *Carer of Child*

INCREASED CONFIDENCE

“Fig Tree has positively created an impact in addressing that problem of accomodation.” - *Carer of Child*

“Lack of proper sleeping accommodation for me was not solved. It is still a problem.” - *Carer of Child*

STABILITY

Challenges that Remain

“Well please we pleading that you guys must increase our monthly allowance so our little needs will be met.”
- *Carer of Child*

“We need a special hospital that we can go to whenever we are sick.”
- *Carer of Child*

“We run out of shoe before the end of the school year. We do not have most of the text books which makes it difficult for us to do our homework.” - *Late Teen*

Revealed during the Impact Assessment is how school attendance has provided more for the beneficiaries that just education. As a result, challenges such as hunger and accomodation have been addressed. This study has revealed The Fig Tree Children are doing much more than supporting education. They are improving the livelihoods of both the student and their families. To further aid their beneficiaries. the data revealed Solutions should remain an ongoing focus of The Fig Tree Children and their funding stream. Doing so, will provide a more sustainable future for the students, the carers, and their community.



8%

Require A Second Pair Of Shoes During The School Year



19%

Require A Medication Stipend



15%

Addressed The *DIRE* Need To Increase The Allowance



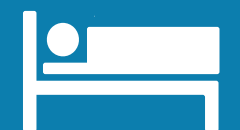
8%

Request Assistance Provisions For Family Members



15%

Have The Need For Specialised Hospital



8%

Require Sleeping And Housing Accomodation

It takes a village

To conclude, challenges around allowance distribution and hunger will remain present. This is accredited to family dynamics. As the students benefit, they will seek to assist other members of their family. Some families are able to apply ingenuity and stretch the money or profit from it; however, other families struggle with the current allowance because it is going to other members of the family.

Should funding acquisition and distribution capabilities experience growth, The Fig Tree Children should incorporate plans to centralise services, which would help to eliminate certain costs while also addressing additional challenges/ achieving more widespread impact.

Currently, logistical constraints (travelling time, distance) have a significant impact on the lives of the students. Furthermore, no medicine and no medical services also cause grievances among the participating families. Hence, by offering centralised education and health services in a hub & spoke model all operations would be centralised, reducing logistical challenges.

The families of the students have already gotten innovative with the allowance. Opportunities lie in centralising services/ incorporating family members/ having the student remain central to their village and economic growth following graduation.

“This has helped us a lot because we had no money to take care of our children. The allowance has helped me to be doing petty trading and use the profit as lunch for my children every day.” - *Late Teen*



Solutions

Assessment of the Contextual data, demonstrates an opportunity for *The Fig Tree Children* to increase their Positive impact and overall Outcomes (touching upon more SDG Targets). Third i Management suggest implementing the following solutions.

“Before the end of the month there will be no money and my grandmother will lend some money to settle some of my problems.”
- *Adolescent Youth*

1

Increase generational support - due to ongoing concerns around family dynamics and the challenges loved ones face/ are having difficulty overcoming.

2

Incorporate (building) low cost accommodation/ sleeping quarters central to the School to eliminate paying rent for the students.

3

Incorporate a medical tent, which would also result in cutting costs, after the initial investment needed for these additions.

4

Create a centralised schooling model. Many of the students have commented on how their shoes quickly deteriorate walking to school.

ThirdiMANAGEMENT

Placing community input into the heart of decision-making.

INSIGHT INTO [IMPACT.COM.AU](https://www.insightintoimpact.com.au)